

The Latest News in the World of Dimpled Sheet:

NEWS

# INTERPLAST® NEWS

## Airport BIAC Brussels National: Pier A

More than 50.000 m<sup>2</sup>  
Dimpled Sheets installed



The classic application field of INTERPLAST dimpled sheet: an all-purpose air-gap/drainage membrane for basement walls and other below-grade structures. INTERPLAST dimpled sheet protects and ventilates

the structural surface. It keeps moisture off walls, is impervious to root penetration and is unaffected by soil bacteria. An additional benefit: increased thermal insulation around the structure.

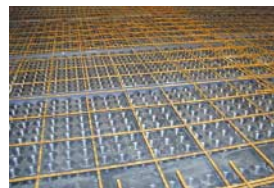
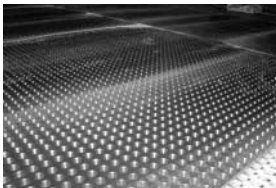
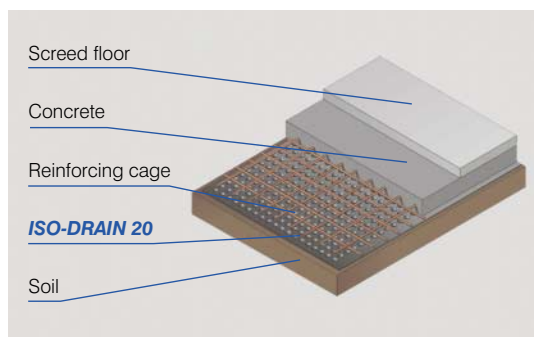
## Dimpled Sheets – the ideal blinding bed...

Installed horizontally, INTERPLAST dimpled sheet provides an ideal blinding bed beneath poured concrete layers.

It provides the following benefits over conventional lean concrete beds:

- no additional excavation required
- no lean concrete required
- rapid installation in any weather
- no curing time
- significant cost savings

INTERPLAST blinding beds reliably protect structures against subgrade moisture.



For more information on INTERPLAST products, visit us at [www.interplast.de](http://www.interplast.de) or ask for our full range of product information brochures.

**INTERPLAST®**  
Inline Process Technologies

INTERPLAST® Kunststoffe GmbH

Bühlwiesenweg 1  
72221 Haiterbach · Germany

Telephone: +49 (0) 74 56 - 9 30 08-0  
Fax: +49 (0) 74 56 - 9 30 08-86

E-Mail: [info@interplast.de](mailto:info@interplast.de)  
<http://www.interplast.de>



INTERPLAST® – Dimpled Sheet From the Specialists in Inline Processes